

(I)

A SYNOPSIS OF TAWANG DISTRICT.

Tawang District was a Sub-Division of West Kameng District till 5th October'1984. This District is situated in Western most part of Arunachal Pradesh. The area of this district is approximately 2,172 Sq. km. Bounded by Tibet (China) to the north, Bhutan to the South-West and Sela ranges separated from West Kameng District in the east.

HISTORICAL GENESIS.



The name of Tawang is believed to have derived from the grandiose of Tawang Monastery perched on the edge of the ridge running along the Western part of Tawang township called TANA- MANDEL KHANG.

The popular interpretation is that the name “TAWANG” is combination of Two words TA and WANG. ‘TA’ is derived from TAMDRIN(HEYAGRIVA) and ‘WANG’ means Initiation. As the legend goes that TERTON PEMALINGPA gave initiation of TAMDRIN to the local people from the site of the present Monastery, where later a Monk named Mera Lama Lodre Gyasto . on Instructions from HH the Fifth Dalai Lama Gyalwa Ngawang Lobsang Gyatso Constructed the Present Tawang Monastery in the later part of 17th Century.

At the instance of the Government of India, the first administrative Centre at Tawang was set-up on 6th February'1951 by Major Ralengnou Bob Khating, a Naga officer of the Indian Frontier Administrative Service (IFAS) and the then Assistant Political officer at Charduar.

In 1984, on 6th October, this Tawang Sub-Division came into a full-fledged district curved out from West Kameng District of Arunachal Pradesh.

(II)

ADMINISTRATIVE SET-UP.

The latest administrative pattern of Tawang District is divided into 3 (Three) Sub-Division Viz: Tawang Sub-Division, Lungla Sub-Division and Jang Sub-division. This district is comprised of 10 (ten) administrative centres namely (1) Jemeithang Circle (2) Lungla Circle (3) Dutongkhar Circle (4) Tawang Circle (5) Kyidphel Circle (6) Jang Circle (7) Mogto Circle (8) Bongkhar Circle (9) Thingbu Circle (10) Lhou Circle.

The administrative set-up is based on single line administration, keeping closest co-operation amongst various developmental departments with the administration to keep step together for speedy development of the people and the area. The Deputy Commissioner being the overall in charge and District Magistrate of the district maintains law and order with the help of Administrative officers and Police force. He also looks after the developmental activities of the district.

The Assam Frontier (Administration of Justice) Regulation, 1945 authorizes the village councils to settle all civil matters and certain criminal matter falling within their jurisdictions. However, for all matters, the Deputy Commissioner and other administrative officers have jurisdiction under the supervision of Assam High Court who hold the Appellate and Revision Authority.

The Panchayat Raj has been introduced in the district with the North East Frontier Agency Panchayat Regulation, 1967. This Panchayat Raj consists of 2 (Two) tier system Viz:- (1) The Gram Panchayat Body exist at the village level (2). The Zilla Parishad operates at the district level. The Regulation provides for the effective participation of the people in the administration of Arunachal Pradesh through the institution set-up under the Panchayat Raj Scheme.

PHYSIOGRAPHY.



The district consists of continuous chain of hills and mountains, the altitude of which varies from 3500 feet to 22500 feet approximately. The highest mountain peak in the district is known as “GORICHEN”{GANGRI-CHENMO} which is 22500 feet approximately from Mean Sea level. In Tawang district, there is high mountain range known as Sela Range consisting of mountainous in the form of big line from Tibet in the North, Bhutan in the South-West and thus a tough terrain to pass through. Its altitude is 13714 feet from MSL.

(III)

The Everest like Chongchongma mountain peak, 14000 feet (approx.) and the sprawling ranges of Shangfu hills are situated near Bletting- the border village of Tawang district. The sky kissing Gorichen and her sister mountains clad in their white snowcapped apparels. Lofty Geshila Range consisting of mountainous in the form of a line is not far from Tawang town and it looks like a protection wall of the district head quarter. The high hills and mountains are snow-bound area in winter season where no habitation exists. There are two main rivers in the district namely- Tawang-Chu and Nyamjang-Chu. These rivers are fed by numbers of turbulent tributaries running through wild mountains and gorges.

CLIMATE.

VIEW OF TAWANG TOWNSHIP



The climatic condition of this district is moderate and pleasant during the summer and extreme chill and biting cold during the winter. The district has high land configuration, the altitude varying from 3500 feet to 22500 feet, with such varying altitude the climate is marked with variation in temperature in accordance with the elevation. The temperature generally goes down to the freezing point in winter. The maximum and minimum average temperature recorded during the year 2013-2014 were 25°C during August and -3°C during December month and the total annual rainfall recorded in district HQ. during the year'2013 was 1,681.9 mm.

FLORA AND FAUNA.

YAK



MEDICINAL PLANT



YARTSAH GOMPO



KEMSANG FLOWER



A wide variety of tree species, blue pines and Orchids grow in natural splendor in the friendly company of precious herbal and medicinal plants. Quite typical high altitude birds,

mammal, reptiles, Snow leopard, Must deer, barking deer, bear and other animals frolic freely without fear as the Monpa people do not practice hunting and trapping.

(IV) INHABITANTS.

The inhabitants of this district are all of Monpa tribe. The Monpa belongs to the Mongoloid stock. They are well built, fair in complexion and medium to tall in structure. The Monpas are friendly, Courteous, mild, gentle, unassuming temperament and naturally they extend wonderful hospitality to the visitors of their homeland.

AVIEW OF BEATING THE MILLETS



The adornments and costumes are many and varied. People cover their whole body with varieties of well-designed woollen garments. They put on typical dress which is both comfortable and useful in climatic condition they live in. The Monpas could be recognized from a long distance owing to the relatively attractive colour of their costume, which is mellow-straw berry-red. The Monpas love this colour and dye their cloths themselves using the locally available vegetable dye. Apart from the normal diet, milk and milk products forms an integral part of their diet. Taking hot tea with salt and butter is one of their favourite food items.

The significance of the Monpa village is the presence of Gonpa (village monastery) situated on the top of the hill and surrounded by a number of prayer flags (Phan), stone shrines (Mane) and Stupa shaped structures called “**CHOISTEN**” on the road and lane side. The houses are usually double or triple storied made mainly of stones and timbers. Each house generally has a family chapel with a statue of Lord Buddha.

The traditional economy of the Monpa’s are depended on agriculture, animal husbandry, trade and commerce. Spinning and weaving of their garments as well as carpet making are done by the women folk. The woodcarving and painting are done by the men folk. In addition, they work under various department and private construction for earning their livelihood as and when get free from agriculture works. Now a days, horticulture and small-scale industries etc., play a significant role in development of their economy.

The family comprising of parents and their un-married children forms basic unit of the society. Monogamy is common form of marriage though polygamy is also practiced in rare case.

The language/dialect-spoken by Monpas comes under broad group of Tibeto-Burmese family of language.

RELIGION.

The district occupies a unique status amongst the Mahayana sect of Buddhism because of the fact that His Holiness the 6th Dalai Lama was born at Urgelling village near Tawang HQ. The Tawang Monastery is one of the most important elements in the social and

religious life of the Monpa. The Monpas are Buddhist by religion and religious beliefs and practices are centered around the Tawang Monastery.

(V)



The 2nd son in a family of three sons is expected to join the Monastery and his brothers when they attain maturity make some religious contribution to the institution for its sustenance in the shape of grains, butter, firewood etc.

The Monastery was founded by Mera Lama Lodre Gyatso in the later part of 17th century. He was disciple of HH the Fifth Dalai Lama.

Tawang Monpa, a Buddhist tribe of Mahayana sect are inhabitant of extreme Western-most district of Arunachal Pradesh. The people are Buddhist by religion and believe in the Gelugpa sect of the Tibetan-Lamaism form of Buddhism.

The significance of the Monpa village is presence of Gonpa (village Monastery) situated on the top of the hill surrounded by a number of prayer flags (Phan), stone shrines (Mane) and Stupa shaped structures called “**CHOISTEN**” on the road and lane side.

The Buddhist prayer flags are printed in Tibetan script “**OM MANE PEME HUNG**” which means “ **HAIL TO HIM WHO IS BORN AS A JEWEL IN A LOTUS**”. The Monpas believe that in whichever direction the flag flutters the atmosphere gets purified because of “**OM MANE PEME HUNG**” which is printed on the prayer flags.

The message of Enlightened one written on the elongated cloth pieces’ flutters from the lofty pine poles. Entrance to houses, Shops and Shrines are engraved with **OM MANE PEMA HUM (OM MANI PADME HUM)**, which means hail to the Jewel in the Lotus.





(VI)

The Tawang Monastery is not only the living example of Mahayana Buddhism but also more eloquently it depicts the very life and blood of Tawang Monpas. About 400 Lamas learn the Buddhist Scriptures round the year under the guidance of learned Monks. The monastic lamas are sustained by the voluntary contributions in kinds by the cultivators of the entire district. It is not a gift but voluntary expression of their faith.

It is eloquently believed by all that the timely prayers and rituals performed in the Monastery reflect their health and wealth, prosperity of their cattle and homesteads. Generally, each Monpa house is having a family chapel with a statue of Lord Buddha.

Tawang district has many aged old traditional Buddhist Nunneries called “**ANI-GONPA**”. In fact there is no any hard and fast regulation in the society compelling any girl child to become a Nun but they join Nun-hood at their own wishes.

FAIRS AND FESTIVAL.

Fairs and festivals have always been an integral part of the Monpa Tribe of Tawang district. The festivals of Monpas are mostly associated with agriculture and religion. Monpas of Tawang district celebrates numbers of festivals every year. Some important festivals are: - **Losar, Torgya Dungyur, Choekor, Ganden Ngamchoe, Drukpa Tse-ze and Zhepa Saka Dawa** etc.



DHERKHA OFFERING DURING THE LOSSAR FESTIVAL

Two major festivals namely “**LOSAR**” and “**TORGYA**” are celebrated in the the District. The special **TORGYA** festival celebrated after every three years is called **DUNGYUR**. The people from all nook & corner of the district come on these auspicious occasion and enjoy with cheer and joy.

TORGYA festival is a Monastic festival being celebrated in the month of January every year. On the occasion of this festival monastic masked dances are performed in the courtyard of the Tawang Monastery.

(VII)

THE VIEW OF VILLAGERSFOR CHOEKOR PROCESSION.



Losar festival is also one of the major festivals of Monpa people, which is celebrated in the last part of February and early part of March every year to commemorate the “New Year”. Group of young people performs Yak and Lion dances from door to door during the festival.



Choskor festival is a religious procession organized by the whole village community. This procession is led by two Kong-Yoks and followed by a long queue of people with bulky and voluminous religious holy books. On this occasion the Monks recites Mantras for the benefit of newly sown crops

Ganden Ngamchoe festival is observed to perpetuate the death anniversary of Je Tsong Khapa the founder of Gelugpa sect of Buddhism. Lamps are lighted in the evening on the house roofs and Verandahs of the houses and Monasteries to commemorate the occasion.

Drukpa Tse-ze festival is celebrated to commemorate the maiden delivery of religious sermon by the Lord Buddha on the Four Nobel Truths to his initial five disciples in Deer Park at Sarnath. On this occasion people pay visit to Monasteries, light-up lamps and chant prayers.

Zhepa Saka Dawa festival is celebrated to mark the birth and achievement of Nirvana by Gautam Buddha.

The festivals of Monpa people are mostly celebrated with an aim to providing Super natural protection to the crops sown and its bumper harvest and also to chase out the evil spirits which usher in the diseases and misfortunes in human being, crops, domestic animals and other unprecedented natural calamities.

(VIII)

PLACES OF TOURIST INTEREST.

A VIEW OF RELIGIOUS LAKE



CHAGZAM BRIDGE



BABTHENG KHANG WATERFALL (BTK)



The Tawang district offers idealistic tourism with its majestic snow-clad hills and mountains, green valley of Tawang-Chu and Nyamjang-chu rivers, colorful flora and fauna, fertile Kharsaneng Valley, ancient monasteries and monuments and colorful people having rich tradition. The district has variegated flora and fauna at the alluring peaks of the mountains and down in the green valleys.

JANG NURANENG WATERFALL



The nature has lavished her plentiful gifts on Tawang district. With its lush-green forest of flora and fauna diversity, sky kissing hills and mountains, graceful water falls, roaring rivers, beautiful natural lakes and hot springs and ancient monuments the district is fascinating tourist spot of tremendous potential. This district has been designed like a hospitable natural host. Even the film stars could not resist themselves and reached there for enriching their films with the beauties of its natural allurements.

This district remains well communicated throughout the year by motorable road right from Tezpur in Assam via Bhalukpong to Tawang. Bomdila is another hill station on way to Tawang where one can saunter a while to refresh oneself with the beauties of township. One has the opportunity to enjoy the beautiful snow-clad hills and mountains, rivers, rivulets, streams, waterfalls, valleys, lakes, deep gorges and natural greenery throughout the period of journey.

Many comfortable tourist lodges and hotels are available at Tawang town to greet the visitors in the most natural and fervent way. The name of hotels and lodges are: - Circuit House, Presidential Lodge, Tourist lodge, Hotel Maa, Hotel Buddha, Hotel Tawang Inn, Hotel Alpine, Hotel Tourist Hut, Hotel Shangrila, Hotel Annapurna, Hotel Gaurichen, Hotel Dungphoo, Hotel Monyul Lodge, Hotel Samdrupling, Hotel Sela, Hotel Sun Rise, Hotel Siddharth, Hotel Rainbow, Hotel Tawang View, Hotel Gangchen, Hotel NEFA , Hotel Dolma, Hotel Gakyi Khangzang, Hotel Happy Valley, Hotel Tashi Gatsel, Hotel Mon Kimezong ,Hotel Dawa , Hotel Taktsang and Hotel Pungteng etc.

One falls in love at first sight as soon as one comes across the beautiful natural lake at Sela-pass. The Sela-pass is a narrow gully surrounded by rocky cliffs of all vegetation. During winter the entire Sela-Range covered with snow becomes completely white. In summer, the Sela top is filled with multicolored Rhododendron flowers, which attracts the visitors. If there is any celestial place on earth, it is Sela-pass providing visitors to fill with heavenly bliss in abundance.

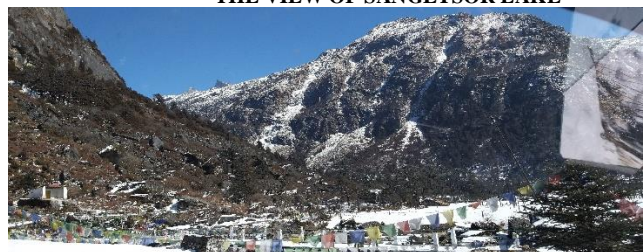
(IX)



It is an adventurous and challenging, as one has to climb the famous Geshila peak. From Geshila peak viewpoint, whole Tawang district can be seen. Both the deciduous and evergreen forest catches the eyes of the visitors.

From the top of Jemiethang, one can see the Indo-Bhutan border, green valley of Ngyamjang-chu river and Gorsam Choisten. Gorsam choisten is a majestic monument build with stones. There are large numbers of prayer wheels around the choisten. In the month of February, a religious ceremony is held there and the people from all over Buddhist area and neighbouring Bhutan attend the occasion and enjoy with cheer and joy.

P.T.TSO Lake is famous for picnic spot. It is believed that Guru Padmasambhava an India saint stayed at Manma-Gyalem Mountain and meditated there. Every year Thousands of devotees visit the site and offers their prayer to Guru Padmasambhava.



SANGETSOR LAKE, was formed in after-math of the 1950 Earthquake. Prior to 1950, the present lake area was reserved grassland where local people of Tawang district have used for grazing their cattle. The scenery and lake itself is so alluring that the photographers often suffer for want of film roll to shoot around.

Gaden Namgyal Lhatse (Tawang Monastery) is one of the largest lamaseries of Mahayana sect and second largest Monastery in Asia after Lhasa. This Monastery is

glimmering like a ship riding the ocean as unforgettable sight and memory to fetch long in one's memory. Tawang Monastery, which overlooks the entire Township and entire Tawang-chu valley, exhilarate one's mind to fetch a memory in life.

(X)

Gyangong Ani Gompa (Buddhist Nunnery) is beautifully perched on the hillock near Tawang township was founded by Mera Lama Lodre Gyatso and believed to have subsequently handed over to his elder sister. One can have a beautiful sight of it from Tawang Monastery.

GADDEN NAMGYAL LHATSE (TAWANG MONASTERY)



Also, there are many other important historical monuments and landscapes available in the district fascinating tourist spots Viz: - Rigyaling Gonpa, Urgelling Gonpa, Bramadongchung Ani Gonpa, Taktsang Gonpa, Jaswant Ghar, Tawang War Memorial, Gorichen peak, Nuraneng water fall, BTK water fall, Bagajang lake, Nugula lake, Thanga Phe lake, Tsechu hot spring, Grengkhar hot spring, Mago hot spring etc attract the visitors and pilgrims to this fairy-land.

Whole district in general and Tawang Township in particular, it seems, have been designed like a hospitable natural host. There is a saying, "Life is not worth living unless he has seen the city of van ice". Much the same holds true of Tawang- the most glorious landscape in Arunachal Pradesh.

The tourism industry is being encouraged by the Government of Arunachal Pradesh, which brings the economy besides cultural exchange and all round development. This district has several locations of historical significance, pilgrim centers, important landscapes and hill stations that can be developed into tourist hot spots. The landscape and topography of this district offers scope for developing the mountaineering, trekking, adventure tourism, Site-seeing, gliding and hiking etc.

Tourism appears to be the most potential area for state's economic development. The analysis of tourism potential in the district presents a very optimistic picture. Development of tourism will have a "multiplier" effect on other industries also, accelerating the face of development. Tawang district is bestowed with immense wealth of nature. Need of the hour is to tap this nature's gift in right and sustainable manner to perpetuate economic growth.

POPULATION (2011-CENSUS)

As per 2011-Census, the Tawang District has recorded a population of 49977 Comprising 29151 Males and 20826 Females. The district Population accounts for 4 percent of total population of the state. The average density of population per Sqkm is 23 as compared to 17 persons for Arunachal Pradesh.

Tawang district ranks 13 in population size with approx. area 2,172 Sqkm among all the 16 districts of Arunachal Pradesh. (District formed after 2011 Census has been not included.)

As per 2011-Census, the literate persons and percentage to the population of the district (Excluding children in the age group 0-6 years) has been recorded as 26861 (60.61 %) out of which 18200 (68.54%) are Males and 8661 (48.75%) are Females. The literacy

(XI)



Rate of the district has increased from 47.3 percent in 2001 to 60.61 percent in 2011-Census (excluding 0-6 years of age group.)

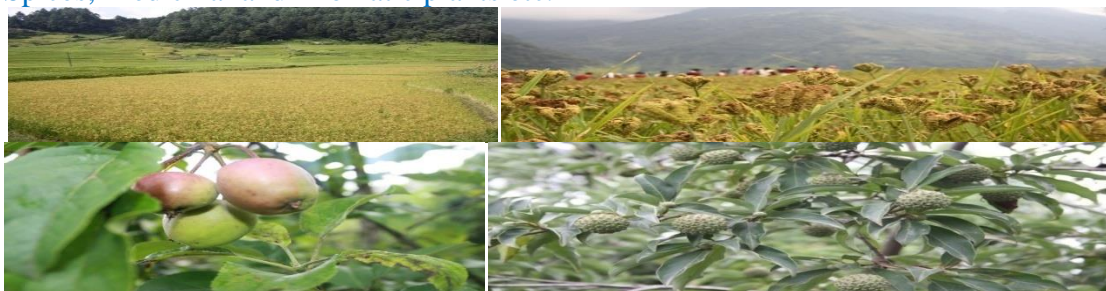
Decadal variation of population of the district is found to be (+) 28.33 percent during the last decade (2001-2011) as compared to 25.92 percent for Arunachal Pradesh.

The Sex Ratio of the district indicates 701 Females per 1000 Males as compared to 920 Females per 1000 Males for Arunachal Pradesh. It is to notice that during the last decade (2001-2011) the sex ratio of Tawang district has decreased from 782 females per 1000 males to 701 females per 1000 males.

AGRICULTURE.

Agriculture is the main occupation of the people of Tawang on which the economy of the district almost entirely depends.

Agriculture in this district was traditionally organic that contributed to preventive health care and well-being in olden days. Jhum cultivation was the most prominent farming system in earlier days. It provided and continues to provide a way of life for most of the ethnic group of this district. Due to varied physiographic and agro-climatic condition, the agricultural practice and prospect of this area differs in some extent from other districts of the state. Diverse of physiographic and agro-climatic feature of this district is congenial for commercial cultivation of both tropical & temperate fruits, Orchid species, Potato, Ginger, Spices, Medicinal and Aromatic plants etc.



At the instance of the Government of India, the major emphasis has been given on effective extension services to wean away the farming community from traditional practice of slash and burn shifting cultivation to settle cultivation in Arunachal Pradesh. The main efforts of the Agriculture department are towards increasing permanent cultivation, land preparation, supply of improved varieties of seeds, grafts, fertilizers, pesticides and insecticide etc. The mes have been succeeded to a great extent in this area. Government is committed to achieve food security and raise income of farmers through commercialization of Agriculture,

(XII)

by encouraging the farmers to increase productivity of land and production of agricultural crops by graduating from Subsistence Agriculture to commercial farming. With persistent efforts made in this direction, it has been possible to reach a significant production level of food crops from a very negligible level since the time of Independence. Even then, there is still a shortfall of require staple food crops annually in this district.



The agriculture and allied sectors have been identified as key area economic development of the state. To generate higher income of cultivators, the Government is providing subsidy to the progressive farmers for purchase of machineries, fertilizers and variety of high yielding seeds etc.

The inhabitants of this district are all of Monpa tribe. The main occupations of the Monpas are Agriculture. They are growing staple food crops like Rice, Millet, Wheat and Maize etc. They are known for terraced cultivation and production of potatoes. Kufri Jyoti variety of Potato is very popular in Tawang District. Numbers of horticultural crops are also being taken up in a big way in recent years.

The progressive cultivators of this district reap a good harvest of Cash Crops like Apple, Plum, Kiwi, Walnut, Potato, Ginger, Cabbage, Soyabean, Turnip and other leafy vegetable etc., and derive considerable financial benefits out of the cash crops produced by them every year.

ANIMAL HUSBANDRY AND VETERINARY.

Animal Husbandry and Veterinary Department in the district is playing a vital role in up-lifting the rural economy of the people of this district. The entire set-up is under the Administrative and technical control of the District Animal Husbandry and Veterinary Officer with his headquarters at Tawang. When the epidemic diseases are prevailing in the area, the department takes great care to protect the lives of Animals and Birds from such disaster. Apart from that the department extent free treatment to the Animals and Birds and takes a great precautionary measures against the epidemic.

Improvements of livestock by cross breeding and extending Veterinary care are the activities of the Veterinary and Animal Husbandry department. Prospect for Dairy, Goatery, Piggery, Sheep breeding and poultry etc. are very good in the district.

There are 4 (four) Veterinary Dispensaries, 11 (eleven) Veterinary Aid Centers, 8 (eight) Cattle up-grading Centers, 4 (four) Sheep & Wool Extension Centers, 1 (one) Poultry Breeding Farm, 1 (one) Pig Breeding Farm and 1(one) District Diagnostic Laboratory in this district.

Tawang district is habitat of unique animals like yak and sheep. The Monpa people are rearing this yak animal with great care since time immemorial. It is treated as an asset of the rural economy.

(XIII)



The yak rearers make their flocks migration, during summer season, along the mountain ridges away from their homestead for grazing. One attendant stays all along at the pasture land for full time attending the flocks and milking. He prepares, butter, ghee and CHURPI (fermented butter) for home consumption as well as commercial purpose. In winter season when heavy snow falls, the entire flocks are brought back to nearby their homestead.

In formative years, the people were very much interested for rearing the sheep, as because they made woolen garments in their traditional method by collecting wool from sheep and used it to protect themselves from peculiar climatic condition of the area, chill and biting cold where they lived in. Now a day, the traders and businessmen making woolen yarns and cloths available at the door step of the local people and within the reach of their hands for sale which cause the people less interest for rearing the sheep. For this reason, the population of sheep is becoming decreasing day by day. If this trend continues, One day the species of sheep may become extinct. But Government is giving persistent efforts to the local people for breeding and rearing the sheep species in the district.

Interested and progressive farmers are earning a good amount of money by selling their dairy products every year for the mean of their livelihood.

MEDICAL AND PUBLIC HEALTH.

Before embracing Buddhism, the people of Tawang were believers of traditional faith characterized by spirit worship and animal sacrifice for spiritual cure. These practices were stopped after, the religious life of the people deeply influenced by the Buddhist Ethic and morality. Subsequently, the people adopt the performance of the religious rites and practices toward-off their health hazards.

Also, the people have their own traditional method of diagnosis and cure by using herbs, roots and leaves of some wild plants as preventive or curative medicine

(XIV)

KHANDRO DROWA ZHANGMO DISTRICT HOSPITAL TAWANG



Gradually the modern scientific methods replace the old traditional practice. As on 31-03-2014 there are 24 medical units including 1 Homeopathic and 1 Ayurvedic units functioning in different parts of this district to take extensive health care for the people of this land. The entire set-up in this district comes under the administrative and technical controls of the District Medical Officer with his headquarter at Tawang.

EDUCATION.



The education is the yardstick to measure the level of development in any region. The education department of this district aims for improvement of educational standard of the people and to raise the percentage of the literacy in the district. The literacy rate of district has increased from 47.3 percent in 2001 to 60.61 percent in 2011-Census (excluding 0-6 years of age group).

Education being a vital component for development of society, Govt. has attached utmost importance to this sector. Special attention has been paid to achieve universalization of education through the Sarva Siksha Abhiyan (SSA) in the district. The Gross enrollments of students in the educational institutions are increasing in the recent years as compared to olden days.

As on 31-03-2014 there are 04 (Four) Higher Secondary Schools, 10 (Ten) Secondary Schools, 48(Forty Eight) Middle Schools and 72 (Seventy Two) Primary Schools are functioning in the district. Out of these 19 No's of educational institutions are run by central/private authorities.

The entire set-up of govt. educational institutions in the district comes under the administrative and technical control of the District Education Officer with his headquarters at Tawang.

(XV)

TEXTILE AND HANDICRAFT.



To promote the tribal arts and crafts, there are 3 (three) craft centers, 3 (three) weaving centers and 1 (one) District Sales Emporium functioning in the District. The craft centers consist of 2 (two) units viz: - TRAINING and PRODUCTION for different crafts such as Weaving/Carpentry/Black smithy/ Carpet making/Wood carving etc., Training in improved method is imparted to the local boys and girls in various crafts so as to encourage the growth of Industries amongst them. The main object of the production units are to manufacture articles to meet the requirements of local govt. departments as well as the people and to provide adequate working facilities to the passed out trainees. The government is conscious that proper development of these crafts will improve quality of life in rural areas. Attempt is being made for increasing production of traditional handloom and handicraft items through up-gradation of skill and modernization of technology.

Local people of this district have a rich tradition of weaving different textiles of exquisite designs. These people are also skillful in making handicrafts out of wood and bamboo with tribal motifs and exquisite designs. Wood and bamboo are brought into use as utensil, basket, container, mat, wine casket, rain shield, Tiffin carrier and furniture & fixture by manufacturing locally for their household uses.

Monpa people are highly skillful in woodcarving. They manufacture various types of wooden utensils viz: - Mortar, Dish, Bowl, Cup and spoon etc. different in size as per their needs.

Women folk are skillful in traditional weaving for different textiles of extremely beautiful designs. They weave various types of wearing apparels which are very useful and comfortable to put on where they live in.

The inhabitants of the district are also known for their knowledge on paper making by traditional method. Locally made paper is relatively superior in quality. The papers are varied quality and are so made as to meet the needs of the nature and utility such as making documents, religious flags and religious books etc.

Potential of people's talents in traditional handloom, handicrafts and pottery are being exploited in the district.

x